

Cerebrospinal fluid neurogranin: relation to cognition and neurodegeneration in Alzheimer's disease

Erik Portelius,¹ Henrik Zetterberg,^{1,2} Tobias Skillbäck,¹ Ulrika Törnqvist,¹ Ulf Andreasson,¹ John Q. Trojanowski,³ Michael W. Weiner,⁴ Leslie M. Shaw,³ Niklas Mattsson⁵ and Kaj Blennow⁶ for the Alzheimer's Disease Neuroimaging Initiative*

*Data used in preparation of this article were obtained from the Alzheimer's Disease Neuroimaging Initiative (ADNI) database (adni.loni.usc.edu). As such, the investigators within the ADNI contributed to the design and implementation of ADNI and/or provided data but did not participate in analysis or writing of this report. A complete listing of ADNI investigators can be found at: http://adni.loni.usc.edu/wp-content/uploads/how_to_apply/ADNI_Acknowledgement_List.pdf.

Synaptic dysfunction is linked to cognitive symptoms in Alzheimer's disease. Thus, measurement of synapse proteins in cerebrospinal fluid may be useful biomarkers to monitor synaptic degeneration. Cerebrospinal fluid levels of the postsynaptic protein neurogranin are increased in Alzheimer's disease, including in the prodementia stage of the disease. Here, we tested the performance of cerebrospinal fluid neurogranin to predict cognitive decline and brain injury in the Alzheimer's Disease Neuroimaging Initiative study. An in-house immunoassay was used to analyse neurogranin in cerebrospinal fluid samples from a cohort of patients who at recruitment were diagnosed as having Alzheimer's disease with dementia ($n = 95$) or mild cognitive impairment ($n = 173$), as well as in cognitively normal subjects ($n = 110$). Patients with mild cognitive impairment were grouped into those that remained cognitively stable for at least 2 years (stable mild cognitive impairment) and those who progressed to Alzheimer's disease dementia during follow-up (progressive mild cognitive impairment). Correlations were tested between baseline cerebrospinal fluid neurogranin levels and baseline and longitudinal cognitive impairment, brain atrophy and glucose metabolism within each diagnostic group. Cerebrospinal fluid neurogranin was increased in patients with Alzheimer's disease dementia ($P < 0.001$), progressive mild cognitive impairment ($P < 0.001$) and stable mild cognitive impairment ($P < 0.05$) compared with controls, and in Alzheimer's disease dementia ($P < 0.01$) and progressive mild cognitive impairment ($P < 0.05$) compared with stable mild cognitive impairment. In the mild cognitive impairment group, high baseline cerebrospinal fluid neurogranin levels predicted cognitive decline as reflected by decreased Mini-Mental State Examination ($P < 0.001$) and increased Alzheimer's Disease Assessment Scale–cognitive subscale ($P < 0.001$) scores at clinical follow-up. In addition, high baseline cerebrospinal fluid neurogranin levels in the mild cognitive impairment group correlated with longitudinal reductions in cortical glucose metabolism ($P < 0.001$) and hippocampal volume ($P < 0.001$) at clinical follow-up. Furthermore, within the progressive mild cognitive impairment group, elevated cerebrospinal fluid neurogranin levels were associated with accelerated deterioration in Alzheimer's Disease Assessment Scale–cognitive subscale ($\beta = 0.0017$, $P = 0.01$). These data demonstrate that cerebrospinal fluid neurogranin is increased already at the early clinical stage of Alzheimer's disease and predicts cognitive deterioration and disease-associated changes in metabolic and structural biomarkers over time.

1 Institute of Neuroscience and Physiology, Department of Psychiatry and Neurochemistry, the Sahlgrenska Academy at the University of Gothenburg, Mölndal, Sweden

2 Department of Molecular Neuroscience, UCL Institute of Neurology, London WC1N 3BG, UK

- 3 Department of Pathology and Laboratory Medicine, Institute on Aging, Center for Neurodegenerative Disease Research, University of Pennsylvania School of Medicine, Philadelphia, PA, USA
- 4 Department of Veterans Affairs Medical Center, Center for Imaging of Neurodegenerative Diseases and Department of Radiology and Biomedical Imaging, University of California, San Francisco, CA, USA
- 5 Clinical Memory Research Unit, Lund University, Sweden
- 6 The Torsten Söderberg Professorship in Medicine at the Royal Swedish Academy of Sciences, Institute of Neuroscience and Physiology, Department of Psychiatry and Neurochemistry, Mölndal, Sweden

Correspondence to: Erik Portelius,
Department of Psychiatry and Neurochemistry,
Sahlgrenska University Hospital/Mölndal, S-431
80 Mölndal, Sweden
E-mail: erik.portelius@neuro.gu.se

Keywords: Alzheimer's disease; neurogranin; cerebrospinal fluid; biomarker; mild cognitive impairment

Abbreviations: ADAS-Cog = Alzheimer's Disease Assessment Scale–cognitive subscale; ADNI = Alzheimer's Disease Neuroimaging Initiative; FDG = ^{18}F -fluorodeoxyglucose; MCI = mild cognitive impairment; MMSE = Mini-Mental State Examination; PBS = phosphate-buffered saline

Introduction

Alzheimer's disease is the most common neurodegenerative disorder and a major health problem. Alzheimer's disease is characterized by pathological hallmarks including neuronal and synaptic degeneration and loss together with deposits of aggregated amyloid- β and tau (Blennow *et al.*, 2010). Biochemical (including CSF measurements of amyloid- β_{42} and tau) and neuroimaging (including PET and MRI) biomarkers may be used to monitor amyloid- β and tau pathology, cortical glucose metabolism and atrophy (Dubois *et al.*, 2014). ^{18}F -fluorodeoxyglucose (FDG) PET is a marker of cortical glucose metabolism that may be related to synaptic function (Mosconi *et al.*, 2008), but until recently, no biomarker reflecting the synaptic pathology in Alzheimer's disease has been available.

Synaptic dysfunction and loss are directly linked to memory disturbances and other cognitive symptoms already at the early stages of Alzheimer's disease, and are believed to precede neuronal degeneration and loss (DeKosky *et al.*, 1990; Bertoni-Freddari *et al.*, 1996). Neuropathological studies have shown that synaptic loss is evident already at the mild cognitive impairment (MCI) stage of Alzheimer's disease (Masliah *et al.*, 2001; Scheff *et al.*, 2007) and is more strongly correlated to the degree of cognitive dysfunction than plaque and tangle pathology (Davies *et al.*, 1987; Blennow *et al.*, 1996; Sze *et al.*, 1997; Masliah *et al.*, 2001). Thus, because synaptic loss occurs early and correlates with cognitive deficits in patients with Alzheimer's disease, biomarkers reflecting this pathophysiological process could be useful for studies of disease mechanisms, to improve tools for early diagnosis and prognosis, and to monitor drug effects on synaptic degeneration in clinical trials of disease-modifying therapies for Alzheimer's disease.

We have previously shown that several pre- and postsynaptic proteins, such as SNAP25, synaptotagmin and

neurogranin, are detectable in CSF (Davidsson *et al.*, 1996, 1999). Neurogranin is a post synaptic protein that is enriched in dendritic spines and plays an important role in long-term potentiation and memory consolidation (Gerendasy *et al.*, 1997; Pak *et al.*, 2000; Huang *et al.*, 2004), which are abnormal in Alzheimer's disease. It contains a calmodulin-binding IQ domain that interacts with and sequesters apo-calmodulin (the Ca^{2+} -free form of calmodulin). On rise of the intracellular Ca^{2+} concentration, neurogranin releases calmodulin, freeing it to bind Ca^{2+} and activate downstream signalling molecules (Hayashi, 2009). In a pilot study, we showed by immunoprecipitation and semi-quantitative western blotting that CSF neurogranin is increased in Alzheimer's disease dementia and correlates with abnormally elevated levels of CSF tau (Thorsell *et al.*, 2010).

To investigate the potential of CSF neurogranin as a biomarker for Alzheimer's disease, we recently produced monoclonal antibodies directed against neurogranin C-terminal regions and showed by mass spectrometry that neurogranin is metabolized into a series of endogenous peptides derived from the C-terminal part of the protein (Kvartsberg *et al.*, 2014). We further developed and used a hybrid immunoaffinity-mass spectrometry method and an enzyme-linked immunosorbent assay (ELISA) to analyse and quantify CSF neurogranin (Kvartsberg *et al.*, 2014). In three independent clinical cohorts, a marked increase in CSF neurogranin levels was found in patients with Alzheimer's disease dementia as well as in the MCI stage of the disease (prodromal Alzheimer's disease) compared to controls, with higher CSF neurogranin levels correlating with a more rapid change in cognition during clinical follow-up (Kvartsberg *et al.*, 2014). These findings suggest that CSF neurogranin is altered in early stage Alzheimer's disease and correlates with cognitive decline.

In this study, we present results on CSF neurogranin in the Alzheimer's Disease Neuroimaging Initiative (ADNI)

cohort of cognitively healthy controls, subjects with MCI and patients with Alzheimer's disease dementia. We tested the specific hypotheses that CSF neurogranin is increased in Alzheimer's disease compared to healthy control, that high CSF neurogranin predicts MCI conversion to Alzheimer's disease dementia and that CSF neurogranin correlates with changes in cognition and Alzheimer's disease molecular pathophysiology, as reflected by FDG-PET and MRI, over time.

Materials and methods

Data used in the preparation of this article were obtained from the ADNI database (adni.loni.usc.edu). The ADNI was launched in 2004 by the National Institute on Aging, the Food and Drug Administration, private pharmaceutical companies and non-profit organizations as a highly innovative public-private partnership. The primary goal of ADNI has been to test whether serial MRI, PET, other biological markers, and clinical and neuropsychological assessment can be combined to measure the progression of MCI and early Alzheimer's disease. The Principal Investigator of this initiative is Michael W. Weiner, MD, VA Medical Center and University of California – San Francisco. ADNI is the result of efforts of many co-investigators from a broad range of academic institutions and private corporations, and subjects have been recruited from over 50 sites across the USA and Canada. The initial goal of the ADNI was to recruit 800 subjects but it has been followed by ADNI-GO and ADNI-2. To date these three protocols have recruited >1500 adults, ages 55 to 90, to participate in the research, consisting of cognitively normal older individuals, people with early or late MCI, and people with early Alzheimer's disease. The follow-up duration of each group is specified in the protocols for ADNI-1, ADNI-2 and ADNI-GO. Subjects originally recruited for ADNI-1 and ADNI-GO had the option to be followed in ADNI-2. For more information, see www.adni-info.org.

Subjects

Our study population consisted of all healthy control, MCI and Alzheimer's disease dementia subjects with available baseline CSF samples from ADNI-1. Inclusion/exclusion criteria are described in detail at <http://www.adni-info.org>. Briefly, all subjects included in ADNI-1 were between the ages of 55 and 90 years, had completed at least 6 years of education, were fluent in Spanish or English, and were free of any significant neurological disease other than Alzheimer's disease. Healthy control subjects had Mini-Mental State Examination (MMSE) score ≥ 24 , and Clinical Dementia Rating scale 0. MCI subjects had MMSE score ≥ 24 , objective memory loss as shown on scores on delayed recall of the Wechsler Memory Scale Logical Memory II [>1 standard deviations (SD) below the normal mean], Clinical Dementia Rating scale 0.5, preserved activities of daily living, and absence of dementia. Patients with Alzheimer's disease dementia fulfilled the National Institute of Neurological and Communicative Disorders and Stroke and the Alzheimer's Disease and Related Disorders Association criteria for probable Alzheimer's disease, had MMSE scores between 20–26 and a

Clinical Dementia Rating scale of 0.5 or 1.0. The evaluation was vigorous across all centres. Almost all of the centres participating in ADNI were experienced clinical trial sites and many were long-standing members of Alzheimer's Disease Cooperative Studies. Study monitors frequently visited all sites to oversee uniform evaluations. The MCI group was stratified into stable MCI (no progression to Alzheimer's disease dementia during at least 2 year follow-up) and progressive MCI (progression to Alzheimer's disease dementia during follow-up). The main analyses therefore included four groups which at baseline included: healthy control ($n = 110$), stable MCI ($n = 68$), progressive MCI ($n = 105$) and Alzheimer's disease dementia ($n = 95$). In a subanalysis, we also describe healthy control subjects who progressed to MCI ($n = 24$) or Alzheimer's disease ($n = 8$) during follow-up. For details on the number of cases in each diagnostic group with data at different time-points, see Table 1.

CSF measurements

CSF collection, processing and storage procedures have been described previously (Shaw *et al.*, 2009). CSF amyloid- β_{42} , total tau and phosphorylated tau were measured using the multiplex xMAP[®] Luminex platform with the INNOBIA AlzBio3 kit (Innogenetics) as described previously (Shaw *et al.*, 2009). Subjects were classified as amyloid- β positive or negative using a previously established cut-off (CSF amyloid- $\beta_{42} < 192$ pg/ml) that maximized the separation of autopsy-confirmed Alzheimer's disease cases with amyloid- β pathology from controls without amyloid- β pathology (Shaw *et al.*, 2009).

Electrochemiluminescence immunoassay for neurogranin

The in-house generated monoclonal antibody Ng7, which binds to an epitope including amino acids 52–65 (Kvartberg *et al.*, 2014), was used as capture antibody in the assay. Quickplex[®] 96-well plates (Mesoscale) were washed once with phosphate-buffered saline (PBS; 150 μ l/well) before coating with Ng7 (25 μ l/well) at a final concentration of 2.0 μ g/ml in PBS overnight at room temperature. After washing with 300 μ l PBS containing 0.05% Tween20 (PBS-Tween) four times for 30 s, the remaining protein binding sites were blocked with 5% MSD[®] Blocker A containing PBS for 1 h at room temperature (150 μ l/well), while shaking at 700 rpm. Thereafter, plates were washed four times with 300 μ l PBS-Tween for 30 s. Then the full-length neurogranin calibrators with concentrations ranging between 31.3–2000 pg/ml, blanks, and CSF samples (50 μ l/well) were incubated in duplicate together with the detector antibody, polyclonal neurogranin anti-rabbit (ab 23570, Upstate) diluted 1:20 000 in 0.1% bovine serum albumin (BSA) in PBS-Tween, overnight at +4°C (50 μ l/well). After washing four times, a MSD[®] SulfoTag goat anti-rabbit antibody diluted to 0.5 μ g/ml in 0.1% BSA in PBS-Tween, was incubated for 1 h at room temperature while shaking at 700 rpm. After washing four times with 300 μ l PBS-Tween for 30 s, 150 μ l of 2 \times MSD Read Buffer T with surfactant was used for immediately reading on the Mesoscale instrument Quickplex SQ 120 reader. A fitted four-parameter logistic model with relative weighing ($1/y^2$) was used as the

Table 1 Number of subjects included at baseline and at follow-ups for each parameter measured

Biomarker	Months after baseline											
	Baseline	6	12	18	24	36	48	60	72	84	96	108
Alzheimer's disease												
Amyloid- β_{1-42}	95											
Total tau	95											
Phosphorylated tau	95											
MMSE	95	93	84	1	76	8	2					
ADAS-Cog	95	93	84	1	76	8	2					
FDG-PET	49	45	41		32							
Hippocampal volume	93	87	74		62							
Healthy controls												
Amyloid- β_{1-42}	110											
Total tau	110											
Phosphorylated tau	110											
MMSE	110	108	106		99	92	64	54	58	47	36	10
ADAS-Cog	110	108	106		99	92	64	54	58	47	36	11
FDG-PET	50	51	44		44	38	32	26	20	18	1	
Hippocampal volume	107	106	100		86	77	47	28	20			
Progressive MCI												
Amyloid- β_{1-42}	105											
Total tau	105											
Phosphorylated tau	105											
MMSE	105	104	105	97	90	76	44	34	31	23	16	4
ADAS-Cog	105	104	105	97	90	76	44	34	31	23	16	5
FDG-PET	54	53	53	48	44	35	18	13	10	6	1	
Hippocampal volume	104	98	98	90	77	61	35	17	7			
Stable MCI												
Amyloid- β_{1-42}	68											
Total tau	68											
Phosphorylated tau	68											
MMSE	68	68	68	66	63	53	24	20	20	15	14	1
ADAS-Cog	68	68	68	66	63	53	24	20	20	15	14	1
FDG-PET	34	34	34	34	30	23	12	9	10	5		
Hippocampal volume	66	66	64	55	53	36	18	15	2			

calibration curve and the blank was included in the calibration curve as zero.

Magnetic resonance imaging

Structural MRI brain scans were acquired using 1.5 T MRI scanners (up to seven time points: screening, and 6, 12, 18, 24, 36 and 48 months) with a standardized protocol including T₁-weighted MRI scans using a sagittal volumetric magnetization prepared rapid gradient echo sequence (Jack *et al.*, 2008). In brief, automated volume measures were performed with FreeSurfer software package (<http://surfer.nmr.mgh.harvard.edu/fswiki>) (Fischl *et al.*, 2002, 2004). We used averaged volume measurements for the right and left hippocampi for this study.

¹⁸F-Fluorodeoxyglucose-PET

ADNI PET image data were acquired (at up to seven times: screening, and at 6, 12, 18, 24, 36 and 48 months after baseline) and processed as described online (adni.loni.ucla.edu/about-data-samples/image-data/ and adni.loni.ucla.edu/

research/pet-post-processing/, respectively). See Landau *et al.* (2012) for a detailed description. Briefly, we used mean PET counts of the lateral and medial frontal, anterior, and posterior cingulate, lateral parietal, and lateral temporal regions.

Cognition

Global cognition was assessed by MMSE (Folstein *et al.*, 1975) and Alzheimer's Disease Assessment Scale–cognitive subscale (ADAS-Cog; Rosen *et al.*, 1984) (at up to seven times: screening, and at 6, 12, 18, 24, 36 and 48 months after baseline).

Statistical analysis

To evaluate potentially confounding factors, we tested associations between CSF neurogranin and demographic factors (age, sex, APOE $\epsilon 4$, education) using Mann-Whitney U and chi-square tests. Associations between the levels of CSF neurogranin and diagnostic groups were tested with linear regression, adjusted for age and sex. To test if amyloid- β influenced these associations, we included the interaction between diagnosis and amyloid- β positivity as a predictor in the model. For

Table 2 Demographic and clinical characteristics of subjects included in the study at baseline

	Control	Alzheimer's disease	Progressive MCI	Stable MCI
Gender, n, female/male (% female)	55/55 (50)	42/53 (44)	37/68 (35)	22/46 (32)
Age at lumbar puncture, years	76 (72–78)	76 (70–80)	75 (70–80)	74 (70–80)
MMSE	29 (29–30)	24 (22–25)***	26 (25–28)***	28 (26–29)***
ADAS-cog	6.3 (4.0–8.0)	17.7 (13.8–21.8)***	12.0 (9.67–15.3)***	9.67 (6.33–12.0)***
Hippocampal volume	3645 (3351–3854)	2740 (2416–3208)***	2988 (2706–3271)***	3417 (3025–3764)
FDG-PET	1.3 (1.2–1.4)	1.1 (1.0–1.2)***	1.2 (1.1–1.3)***	1.2 (1.1–1.3)
CSF amyloid- β_{1-42} , pg/ml	220 (160–253)	138 (122–159)***	139 (123–163)***	184 (133–245)***
CSF total tau, pg/ml	61 (50–86)	111 (81–154)***	97 (75–129)***	69 (51–110)*
CSF phosphorylated tau, pg/ml	20 (16–28)	36 (29–49)***	38 (26–48)***	24 (18–39)*
CSF neurogranin, pg/ml	304 (161–453)	485 (349–744)***	492 (330–672)***	386 (190–582)

The values presented are median (IQR).

* $P < 0.05$ versus controls; ** $P < 0.01$ versus controls; *** $P < 0.001$ versus controls.

MMSE and hippocampal volume we derived intercepts (baseline values) and slopes (rates of change) using linear mixed effects models. The intercept and slopes were then used as outcomes in linear regression models with CSF neurogranin as predictor (adjusted for age and sex; and for intracranial volume for hippocampal volume; and for education for MMSE), within diagnostic groups. In the MCI group, associations between baseline CSF neurogranin levels and subsequent disease progression, as measured by MMSE, ADAS-Cog, hippocampal volume and average FDG-PET of angular, temporal, and posterior cingulate cortex were tested with linear mixed effects models, adjusted for age and sex (and education for cognitive measurements and intracranial volume for hippocampal volume). The impact of baseline CSF neurogranin levels was further illustrated by dividing the subjects with an MCI diagnosis at baseline into quartile groups according to CSF neurogranin levels at baseline and comparing linear regression models between the quartile groups. The linear regression was adjusted for age and sex (and education for cognitive measurements and intracranial volume for hippocampal volume). The associations of neurogranin with the other CSF biomarkers amyloid- β_{1-42} , total tau and phosphorylated tau were investigated with Spearman's correlation. All tests were two-sided, and significance was determined at $P < 0.05$. All statistics were done using R (v. 3.0.1, The R Foundation for Statistical Computing), SPSS version 20 (IBM).

Results

Baseline demographic and biomarker characteristics of the study participants are shown in Table 2 and the demographic information and biomarker characteristics at baseline of subjects followed to at least month 48 are shown in Supplementary Table 1.

CSF neurogranin levels in different diagnostic groups

CSF neurogranin levels were significantly higher in patients with Alzheimer's disease dementia and MCI as compared to healthy controls ($P < 0.0001$ for both groups). Higher CSF neurogranin levels were also found in both the stable MCI ($P = 0.039$) and progressive MCI ($P < 0.001$) subgroups as

compared with healthy controls, and in Alzheimer's disease dementia ($P = 0.005$) and progressive MCI ($P = 0.015$) compared with stable MCI (Fig. 1A). Among the healthy controls, 32 individuals progressed to MCI or Alzheimer's disease dementia during follow-up (progressive healthy control group). These subjects had significantly higher CSF neurogranin ($P = 0.025$, adjusted for age and sex) [median (interquartile range, IQR), 382 pg/ml (256–523)] compared with cognitively stable healthy control [median (IQR), 287 pg/ml (138–377)] (Fig. 1B). For comparison, the CSF amyloid- β_{1-42} levels were similar between these two groups [median (IQR), 225 pg/ml (173–258)] and 210 pg/ml (139–234) for cognitively stable controls and healthy control who progressed to MCI or Alzheimer's disease dementia, respectively.

CSF neurogranin levels in relation to amyloid- β pathology

Low CSF amyloid- β_{1-42} has been shown in several studies to correspond to cortical amyloid deposition as evaluated by amyloid- β amyloid PET, also within the ADNI study (Mattsson *et al.*, 2014). To explore the association between CSF neurogranin and amyloid- β amyloid pathology, study subjects were dichotomized into CSF amyloid- β -positive and -negative using the previously established cut-off for CSF amyloid- β_{1-42} of 192 pg/ml (Shaw *et al.*, 2009). CSF amyloid- β -positive stable MCI, progressive MCI and Alzheimer's disease dementia patients all had increased CSF neurogranin as compared to CSF amyloid- β -negative healthy controls ($P < 0.001$ for all three groups, Fig. 2), whereas amyloid- β -negative stable MCI, progressive MCI and Alzheimer's disease dementia patients had CSF neurogranin levels in the same range as amyloid- β -negative healthy control subjects. Furthermore, amyloid- β -positive progressive MCI, and Alzheimer's disease dementia cases had increased CSF neurogranin compared to amyloid- β -negative stable MCI patients ($P < 0.001$ for both groups). There was no significant correlation between CSF amyloid- β_{42} and neurogranin in healthy control subjects. In stable MCI, progressive MCI, and Alzheimer's disease dementia patients, CSF amyloid- β_{42}

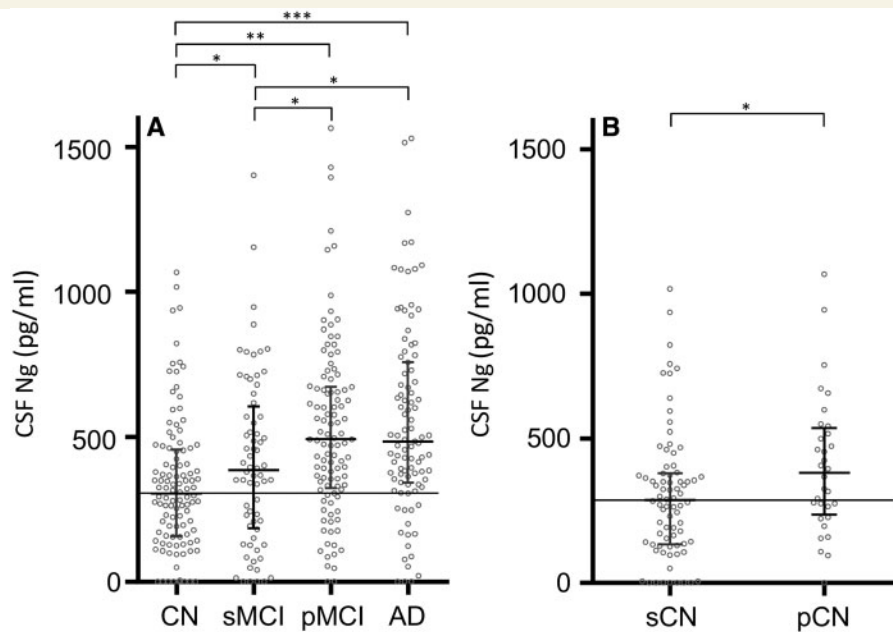


Figure 1 CSF neurogranin levels in different diagnostic groups. (A) Scatter plots showing CSF neurogranin levels in healthy control, stable MCI (sMCI), progressive MCI (pMCI) and Alzheimer's disease (AD). Among the healthy control subjects, 32 individuals progressed to MCI or Alzheimer's disease dementia during follow-up (progressive healthy controls) (B). The data are presented as medians and interquartile ranges. Differences between groups were assessed by linear regression, adjusted for age and sex. * $P < 0.05$; ** $P < 0.01$; *** $P < 0.0001$.

and neurogranin were negatively correlated ($r_s = -0.29$, $P = 0.019$; $r_s = -0.28$, $P = 0.0037$; and $r_s = -0.21$, $P = 0.038$ for stable MCI, progressive MCI, and Alzheimer's disease dementia, respectively).

CSF neurogranin levels in relation to tau biomarkers

Both total tau and phosphorylated tau were strongly correlated with neurogranin in healthy controls ($r_s = 0.75$ for total tau and $r_s = 0.59$ for phosphorylated tau, both $P < 0.0001$), stable MCI ($r_s = 0.82$ for total tau and $r_s = 0.68$ for phosphorylated tau, both $P < 0.0001$), progressive MCI ($r_s = 0.75$ for total tau and $r_s = 0.58$ for phosphorylated tau, both $P < 0.0001$) and Alzheimer's disease dementia patients ($r_s = 0.76$ for total tau and $r_s = 0.75$ for phosphorylated tau, both $P < 0.0001$) (Fig. 3A–D).

CSF neurogranin in relation to cognition and future cognitive change

CSF neurogranin did not correlate with baseline MMSE or ADAS-Cog scores (Fig. 4A and B). In contrast, high CSF neurogranin levels correlated significantly with a more rapid increase in ADAS-Cog scores in progressive MCI during the clinical follow-up period ($\beta = 0.0017$, $P = 0.01$ for ADAS-Cog). There were also trends for associations between high CSF neurogranin and with more rapid change in MMSE (for progressive MCI) and ADAS-Cog (for progressive MCI and Alzheimer's disease dementia)

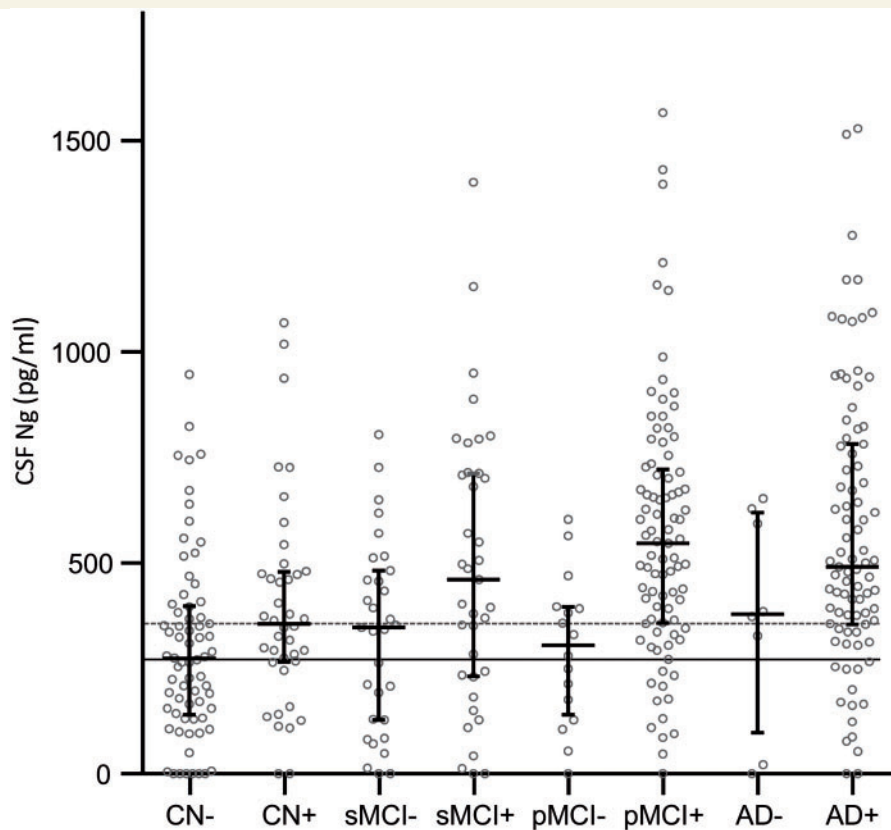
during follow-up, but these did not reach statistical significance (Fig. 4C and D).

CSF neurogranin in relation to brain structure and cognition

Next, we examined whether CSF neurogranin correlated with structural measures of hippocampal atrophy as measured with MRI or with functional measures of cortical glucose metabolism as measured using FDG-PET. CSF neurogranin was not associated with baseline hippocampal volume or FDG-PET in the Alzheimer's disease dementia, progressive MCI, stable MCI or healthy control groups (Fig. 5A and B). However, CSF neurogranin was associated with rate of hippocampal atrophy during the follow-up period in the healthy control group ($\beta = -0.016$, $P = 0.095$) and the progressive MCI group ($\beta = -0.017$, $P = 0.044$) (Fig. 5C), whereas in the stable MCI and Alzheimer's disease dementia groups, no such associations were found. In addition, CSF neurogranin was associated with rate of decrease in cortical glucose metabolism in the Alzheimer's disease dementia group ($\beta = -7.1 \times 10^{-6}$, $P = 0.014$) (Fig. 5D).

CSF neurogranin as a predictor of disease progression

Based on the baseline CSF neurogranin levels, all subjects with an MCI diagnosis at baseline were classified into quartiles (low, low-medium, medium-high and high), which were tested for associations with disease progression as examined by longitudinal change in MMSE, ADAS-Cog,



	sMCI+	pMCI+	AD+
CN-	***	***	***
sMCI-	*	***	***
pMCI-	*	***	***
CN+		**	**

Figure 2 Scatter plot showing the subjects included in the study classified as amyloid positive (+) or negative (–) based on a previously established cut-off (CSF amyloid- β_{42} < 192 pg/ml). The data are presented as medians and interquartile ranges. Differences between groups were assessed by linear regression, adjusted for age and sex. * $P < 0.05$; ** $P < 0.01$; *** $P < 0.001$. Ng = neurogranin.

hippocampal volume, and cortical glucose metabolism. In a concentration-dependent manner, MMSE score decreased ($P < 0.001$ for all quartiles) over years from baseline for all quartiles (Q1 $\beta = -0.366$, Q2 $\beta = -0.656$, Q3 $\beta = -0.834$, Q4 $\beta = -1.016$), with a more pronounced decrease with higher baseline CSF neurogranin levels (Fig. 6A). A similar concentration-dependent change was evident for ADAS-Cog ($P < 0.001$ for all quartiles, Q1 $\beta = 0.575$, Q2 $\beta = 0.811$, Q3 $\beta = 1.405$, Q4 $\beta = 2.275$) (Fig. 6B). Expressed in an alternative way, the quartile of MCI subjects with highest CSF neurogranin decreased on average by 1.016 points on MMSE and increased 2.274 points on ADAS-Cog per year as compared with 0.366 and 0.575 points, respectively, for cases with the lowest neurogranin levels at baseline.

A more pronounced rate of loss of hippocampal volume was also found to depend on baseline CSF neurogranin levels, with high neurogranin predicting higher rate of atrophy ($P < 0.001$ for all quartiles, Q1 $\beta = -66.0$, Q2 $\beta = -77.1$, Q3 $\beta = -107.4$, Q4 $\beta = -93.1$) (Fig. 6C). Similarly, rate of decrease in cortical glucose metabolism as measured by FDG-PET depended on baseline CSF neurogranin levels ($P < 0.001$, Q1 $\beta = -0.019$, Q2 $\beta = -0.022$, Q3 $\beta = -0.031$, Q4 $\beta = -0.036$) (Fig. 6D). Thus, the quartile of MCI subjects with lowest CSF neurogranin at baseline lost 66.0 mm³ of hippocampal tissue volume per year, as compared with 93.1 mm³ for cases with the highest neurogranin levels at baseline.

The descriptive analysis above suggested that higher baseline CSF neurogranin was associated with deterioration in

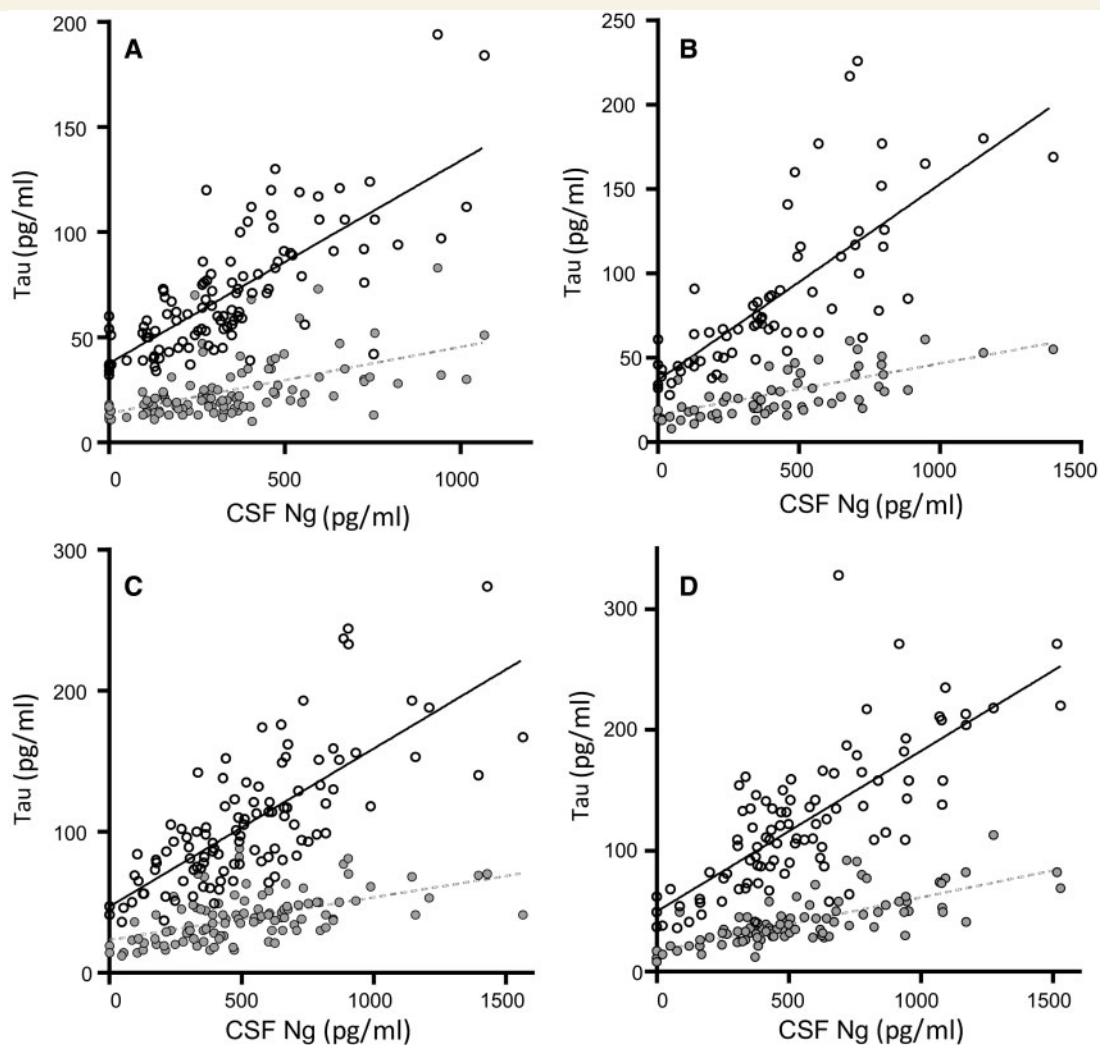


Figure 3 CSF neurogranin levels in relation to tau biomarkers. Correlations between CSF neurogranin levels and total tau and phosphorylated tau in healthy control (A), stable MCI (B), progressive MCI (C) and Alzheimer's disease (D). Open circles and the solid line represent the correlation between total tau and neurogranin while closed circles and the dashed line represents the correlation between phosphorylated tau and neurogranin. The association between neurogranin and total and phosphorylated tau was investigated with Spearman's correlation. The regression lines in the figures are only for visualization.

these four parameters (hippocampal volume, FDG-PET, MMSE and ADAS-Cog). To test this statistically we tested the interaction between CSF neurogranin and time in linear mixed models (adjusted for age and sex, and for education when analysing MMSE and ADAS-Cog, and intracranial volume when analysing hippocampal volume). The analyses showed that higher CSF neurogranin was significantly associated with longitudinal deterioration in all four parameters (hippocampal volume, $\beta_{\text{interaction}} = -0.0364$, $P = 0.0051$; FDG-PET, $\beta_{\text{interaction}} = -0.0000335$, $P < 0.001$; MMSE, $\beta_{\text{interaction}} = -0.000862$, $P = 0.021$; ADAS-Cog, $\beta_{\text{interaction}} = 0.0024$, $P = 0.00020$).

Discussion

Neuropathological studies have shown that synaptic loss is found in the very early stages of Alzheimer's disease and

may precede neuronal degeneration (DeKosky *et al.*, 1990; Bertoni-Freddari *et al.*, 1996; Masliah *et al.*, 2001; Scheff *et al.*, 2007). Even though there are several neuropathological characteristics of Alzheimer's disease, including amyloid- β and tau pathology, synaptic pathology is not only a very early change, but is probably also the direct substrate of cognitive decline, showing a tight correlation with degree of cognitive symptoms and dementia (Davies *et al.*, 1987; Blennow *et al.*, 1996; Masliah *et al.*, 2001; Sze *et al.*, 1997). A biomarker reflecting this pathophysiological process may be useful for studies of the underlying disease mechanisms contributing to Alzheimer's disease, to predict progression of disease and may serve as a surrogate marker in treatment trials to monitor effects on reducing the rate of synaptic degeneration. Therefore, in the present study we evaluated CSF neurogranin levels in the ADNI cohort and investigated its performance to predict cognitive decline and indices of brain injury.

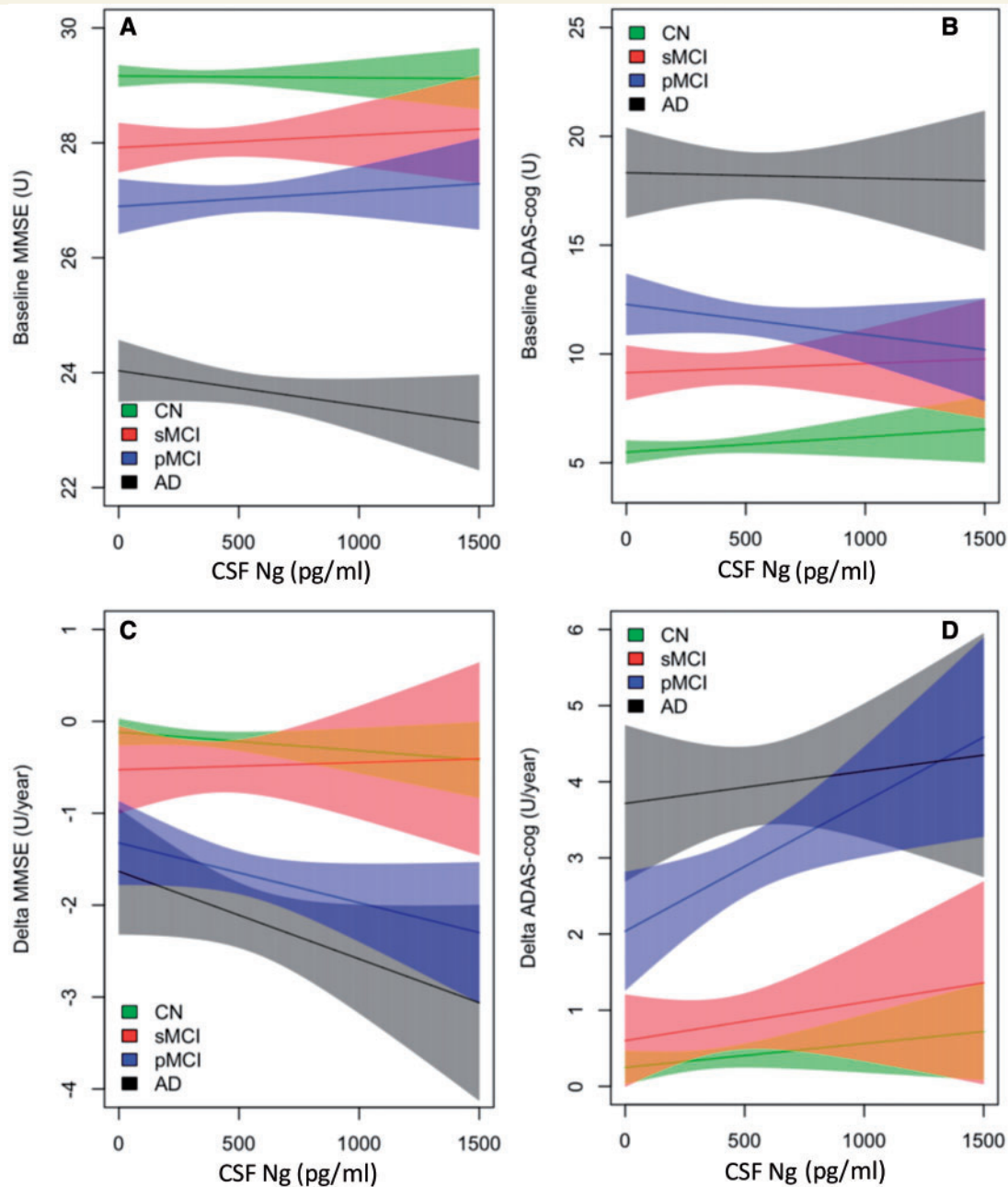


Figure 4 CSF neurogranin in relation to cognition and future cognitive change. MMSE and ADAS-Cog at baseline (A and B) and over time (C and D) as a function of baseline CSF neurogranin (Ng) in different diagnostic groups. Shaded areas indicate 95% confidence interval (CI) of the mean. CN = cognitively normal (green); sMCI = stable MCI (red); pMCI = progressive MCI (blue); AD = Alzheimer's disease (grey).

Neurogranin is highly expressed in the same grey matter brain regions that are affected in Alzheimer's disease, i.e. the cerebral cortex, hippocampus, and amygdala, while it is almost absent in the thalamus, cerebellum, brainstem and the spinal cord (Represa *et al.*, 1990). This synaptic protein is primarily expressed in excitatory neurons and is concentrated in distal dendrites and dendritic spines (Alvarez-Bolado *et al.*, 1996), where it regulates calmodulin availability, thereby playing an important role in the regulation of synaptic signalling, long-term potentiation induction and memory consolidation (Baudier *et al.*, 1991;

Huang *et al.*, 1993; Diez-Guerra, 2010). Consequently, this synaptic protein may thus serve as a biomarker to monitor an important aspect of Alzheimer's disease molecular pathogenic mechanisms that previously has been difficult to assess in living patients.

CSF neurogranin was significantly increased in Alzheimer's disease dementia and progressive MCI as compared with healthy control. These findings validate our previous study in which we showed an increase in CSF neurogranin levels in Alzheimer's disease dementia and progressive MCI (Kvartberg *et al.*, 2014). In that study, we

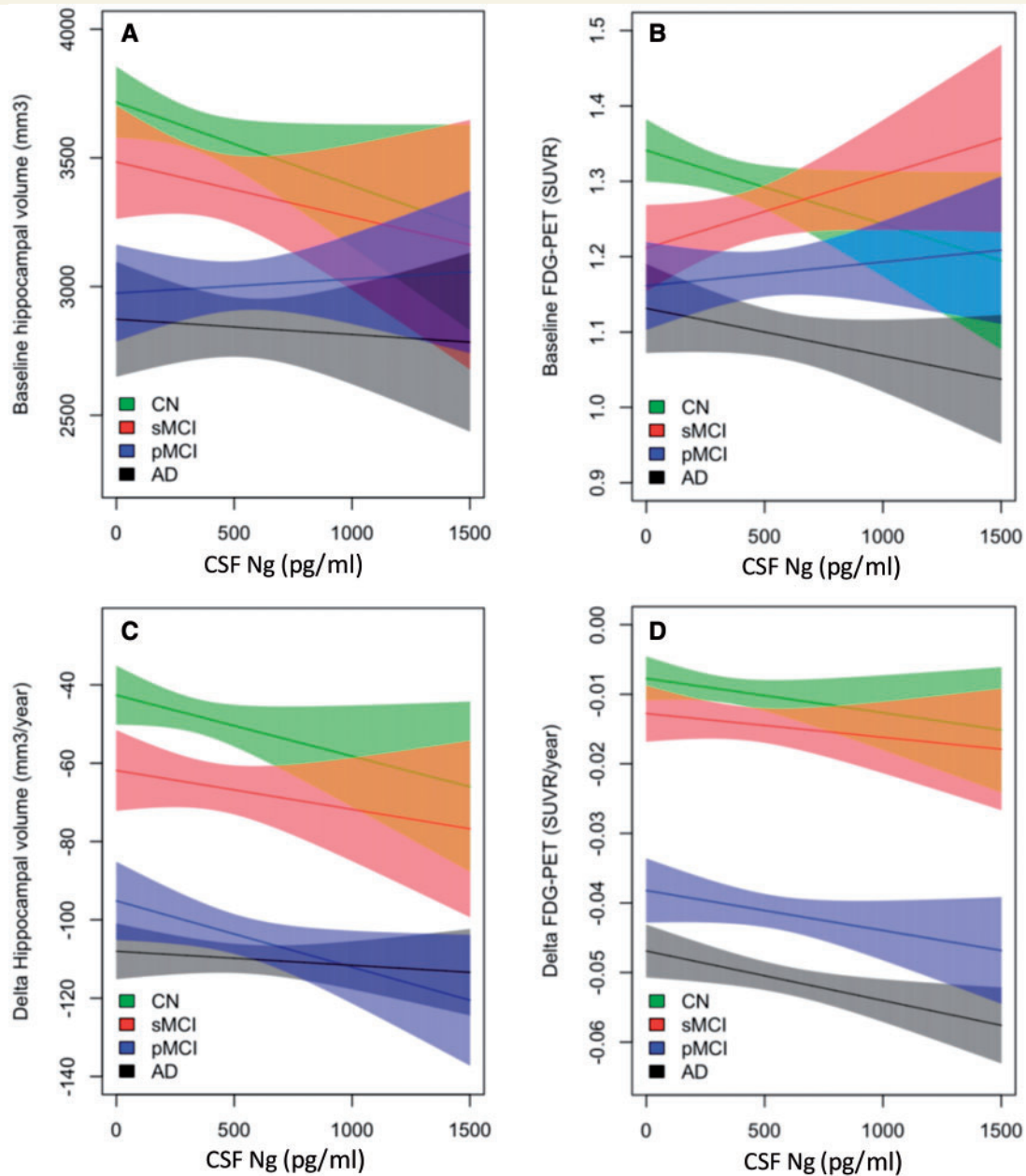


Figure 5 CSF neurogranin in relation to brain structure and cognition. Hippocampal volume and FDG-PET at baseline (**A** and **B**) and over time (**C** and **D**) as a function of baseline CSF neurogranin in different diagnostic groups. Shaded areas indicate 95% CI of the mean. CN = cognitively normal (green); sMCI = stable MCI (red); pMCI = progressive MCI (blue); AD = Alzheimer's disease (grey).

demonstrated that neurogranin is metabolized into a series of C-terminal peptides using hybrid immunoaffinity-mass spectrometry and that the endogenous peptide neurogranin_{48–76}, which is the dominating endogenous peptide in human brain tissue, is significantly increased in Alzheimer's disease compared to healthy control subjects (Kvartsberg *et al.*, 2014). In two independent clinical cohorts including Alzheimer's disease dementia and healthy control subjects, the samples were analysed by both hybrid immunoaffinity-mass spectrometry and an in-house developed immunoassay and the results were highly correlated in both clinical studies. In our previous study, we also

showed that progressive MCI patients had increased CSF neurogranin levels compared to stable MCI (Kvartsberg *et al.*, 2014), a finding that we confirmed in the present study. In conclusion, CSF neurogranin is significantly increased in Alzheimer's disease dementia and progressive MCI as compared to healthy control and also in progressive MCI as compared to stable MCI.

Biomarkers for pathological changes that are present before overt clinical onset would be highly valuable in longitudinal clinical studies on Alzheimer's disease. To investigate whether CSF neurogranin levels can be used to identify MCI patients with an underlying amyloid- β

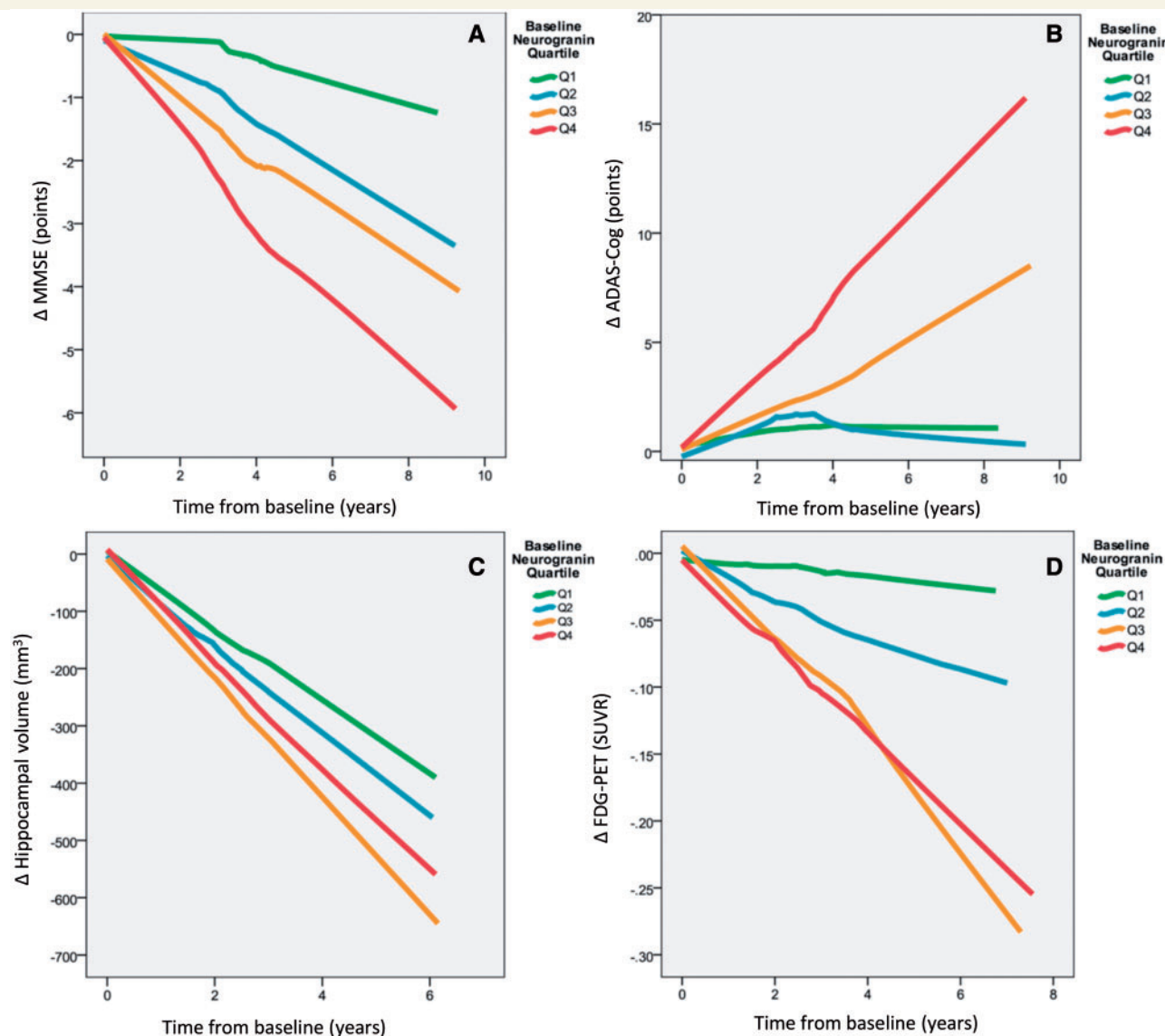


Figure 6 CSF neurogranin as a predictor of disease progression. The patients were divided into quartiles according to CSF neurogranin levels at baseline. All trend lines were calculated using local regression. **(A)** Patients with higher levels of CSF neurogranin at baseline have faster disease progression over time as measured by change in MMSE scores. Quartile 1: $n = 43$, quartile 2: $n = 43$, quartile 3: $n = 42$ and quartile 4: $n = 45$. **(B)** Patients with higher levels of CSF neurogranin at baseline have faster disease progression over time as measured by change in ADAS-Cog scores. However, Q2 and Q1 overlap. Quartile 1: $n = 43$, quartile 2: $n = 43$, quartile 3: $n = 42$ and quartile 4: $n = 45$. **(C)** Generally, patients with higher levels of CSF neurogranin at baseline have faster disease progression over time as measured by hippocampal volume change. However, the patients with the highest levels of CSF neurogranin (Q4) progress slower than Q3. Quartile 1: $n = 43$, quartile 2: $n = 42$, quartile 3: $n = 42$ and quartile 4: $n = 43$. **(D)** Patients with higher levels of CSF neurogranin at baseline have faster disease progression over time as measured by change in FDG-PET signals. However, Q3 and Q4 overlap. Quartile 1: $n = 19$, quartile 2: $n = 26$, quartile 3: $n = 21$ and quartile 4: $n = 22$. SUVR = standardized uptake value ratio.

pathology, each group included in the study was dichotomized into either amyloid-positive (amyloid- $\beta_{1-42} < 192$ pg/ml) or amyloid-negative (amyloid- $\beta_{1-42} > 192$ pg/ml). As expected, the CSF neurogranin levels were significantly increased in the CSF amyloid- β -positive Alzheimer's disease group. In addition, high CSF neurogranin levels were also found in the amyloid-positive progressive MCI group, suggesting that CSF neurogranin is an early pathophysiological marker of Alzheimer's

disease-related synaptic loss. This is further supported by the finding that the 32 healthy control subjects who converted to MCI or Alzheimer's disease dementia during follow-up had increased CSF neurogranin levels compared to the other healthy control subjects and the finding that high CSF neurogranin correlated with a more rapid rate of cognitive decline in MCI patients.

When evaluating CSF biomarkers for Alzheimer's disease, it is important to consider that there is a continuum of

pathology, e.g. in amyloid plaque numbers, without any clear discrimination between patients with Alzheimer's disease and cognitively intact elderly who died from other reasons (Curtis *et al.*, 2015). Further, mixed pathology is very common in elderly patients with dementia. Indeed, elderly patients with Alzheimer's disease have multiple pathologies; except for tangles and plaques a large proportion also have TDP-43 and α -synuclein as well as vascular pathologies (Kovacs *et al.*, 2013). Cerebrovascular co-morbidities such as subtle hippocampal ischaemic injury and cerebral cortical microinfarcts cannot be consistently identified, even using high resolution MRI. This overlap in pathology may confound the diagnostic performance of a putative Alzheimer's disease biomarker. In agreement with this reasoning, the best diagnostic separation for CSF neurogranin was found when dichotomizing the diagnostic groups into CSF amyloid- β -positive and negative subgroups.

The current data set also allowed us to examine the associations of CSF neurogranin levels with two other key biomarkers for Alzheimer's disease: hippocampal atrophy rate measured by volumetric MRI and cortical glucose metabolism assessed by FDG-PET. We found associations between high CSF neurogranin levels and increased rate of hippocampal atrophy as well as reductions in cortical glucose metabolism, especially when testing the combined MCI group. Considering that synaptic dysfunction and loss probably is the main cause of the reduced cortical glucose metabolism in Alzheimer's disease and that loss of neuropil (i.e. neurites, and pre- and postsynaptic elements) underlie hippocampal atrophy, we suggest that CSF neurogranin indeed is an independent novel biomarker for synaptic pathology in neurodegenerative diseases such as Alzheimer's disease.

In conclusion, our findings support the use of CSF neurogranin as a biomarker for synaptic pathology in Alzheimer's disease. CSF neurogranin was increased already in predementia stages of Alzheimer's disease and higher concentrations correlated with a higher rate of cognitive deterioration, decreased glucose metabolism and higher hippocampal atrophy rates. We propose that CSF neurogranin levels are an independent measure of synaptic integrity which previously has been difficult to assess in living patients. Future studies may further explore this biomarker in relation to other aspects of Alzheimer's disease, as well as in other neurodegenerative disorders, and for its potential roles in clinical research, trials and practice.

Funding

Data collection and sharing for this project was funded by the Alzheimer's Disease Neuroimaging Initiative (ADNI) (National Institutes of Health Grant U01 AG024904) and DOD ADNI (Department of Defense award number W81XWH-12-2-0012). ADNI is funded by the NIA, the National Institute of Biomedical Imaging and Bioengineering, and through generous contributions from

the following: Alzheimer's Association; Alzheimer's Drug Discovery Foundation; Araclon Biotech; BioClinica, Inc.; Biogen Idec Inc.; Bristol-Myers Squibb Company; Eisai Inc.; Elan Pharmaceuticals, Inc.; Eli Lilly and Company; EuroImmun; F. Hoffmann-La Roche Ltd and its affiliated company Genentech, Inc.; Fujirebio; GE Healthcare; IXICO Ltd.; Janssen Alzheimer Immunotherapy Research & Development, LLC.; Johnson & Johnson Pharmaceutical Research & Development LLC.; Medpace, Inc.; Merck & Co., Inc.; Meso Scale Diagnostics, LLC.; NeuroRx Research; Neurotrack Technologies; Novartis Pharmaceuticals Corporation; Pfizer Inc.; Piramal Imaging; Servier; Synarc Inc.; and Takeda Pharmaceutical Company. The Canadian Institutes of Health Research is providing funds to support ADNI clinical sites in Canada. Private sector contributions are facilitated by the Foundation for the National Institutes of Health (www.fnih.org). The grantee organization is the Northern California Institute for Research and Education, and the study is coordinated by the Alzheimer's Disease Cooperative Study at the University of California, San Diego. ADNI data are disseminated by the Laboratory for Neuro Imaging at the University of Southern California. This research was also supported by NIH grants P30 AG010129 and K01 AG030514. The study was supported by the Swedish Research Council (project # 14002, K2010-63P-21562-01-4, K2011-61X-20401-05-6), the Knut and Alice Wallenberg Foundation, Stiftelsen Gamla Tjänarinnor, Magnus Bergvalls Stiftelse, Gun och Bertil Stohnes Stiftelse, Axel Linders stiftelse, the Swedish Brain foundation, the Alzheimer Foundation, Sweden, the Dementia Association, Sweden, the JPND Project BIOMARKAPD and the Swedish Brain Power consortium.

Supplementary material

Supplementary material is available at *Brain* online.

References

- Alvarez-Bolado G, Rodriguez-Sanchez P, Tejero-Diez P, Fairen A, Diez-Guerra FJ. Neurogranin in the development of the rat telencephalon. *Neuroscience* 1996; 73: 565–80.
- Baudier J, Deloulme JC, Van Dorsselaer A, Black D, Matthes HW. Purification and characterization of a brain-specific protein kinase C substrate, neurogranin (p17). Identification of a consensus amino acid sequence between neurogranin and neuromodulin (GAP43) that corresponds to the protein kinase C phosphorylation site and the calmodulin-binding domain. *J Biol Chem* 1991; 266: 229–37.
- Bertoni-Freddari C, Fattoretti P, Casoli T, Caselli U, Meier-Ruge W. Deterioration threshold of synaptic morphology in aging and senile dementia of Alzheimer's type. *Anal Quant Cytol Histol* 1996; 18: 209–13.
- Blennow K, Bogdanovic N, Alafuzoff I, Ekman R, Davidsson P. Synaptic pathology in Alzheimer's disease: relation to severity of dementia, but not to senile plaques, neurofibrillary tangles, or the ApoE4 allele. *J Neural Transm* 1996; 103: 603–18.

- Blennow K, Hampel H, Weiner M, Zetterberg H. Cerebrospinal fluid and plasma biomarkers in Alzheimer disease. *Nat Rev Neurol* 2010; 6: 131–44.
- Curtis C, Gamez JE, Singh U, Sadowsky CH, Villena T, Sabbagh MN, et al. Phase 3 trial of flutemetamol labeled with radioactive fluorine 18 imaging and neuritic plaque density. *JAMA Neurol* 2015; 72: 287–94.
- Davidsson P, Jahn R, Bergquist J, Ekman R, Blennow K. Synaptotagmin, a synaptic vesicle protein, is present in human cerebrospinal fluid: a new biochemical marker for synaptic pathology in Alzheimer disease?. *Mol Chem Neuropathol* 1996; 27: 195–210.
- Davidsson P, Puchades M, Blennow K. Identification of synaptic vesicle, pre- and postsynaptic proteins in human cerebrospinal fluid using liquid-phase isoelectric focusing. *Electrophoresis* 1999; 20: 431–7.
- Davies CA, Mann DM, Sumpter PQ, Yates PO. A quantitative morphometric analysis of the neuronal and synaptic content of the frontal and temporal cortex in patients with Alzheimer's disease. *J Neurol Sci* 1987; 78: 151–64.
- DeKosky ST, Scheff SW. Synapse loss in frontal cortex biopsies in Alzheimer's disease: correlation with cognitive severity. *Ann Neurol* 1990; 27: 457–64.
- Diez-Guerra FJ. Neurogranin, a link between calcium/calmodulin and protein kinase C signaling in synaptic plasticity. *IUBMB Life* 2010; 62: 597–606.
- Dubois B, Feldman HH, Jacova C, Hampel H, Molinuevo JL, Blennow K, et al. Advancing research diagnostic criteria for Alzheimer's disease: the IWG-2 criteria. *Lancet Neurol* 2014; 13: 614–29.
- Fischl B, Salat DH, Busa E, Albert M, Dieterich M, Haselgrove C, et al. Whole brain segmentation: automated labeling of neuroanatomical structures in the human brain. *Neuron* 2002; 33: 341–55.
- Fischl B, van der Kouwe A, Destrieux C, Halgren E, Segonne F, Salat DH, et al. Automatically parcellating the human cerebral cortex. *Cereb Cortex* 2004; 14: 11–22.
- Folstein MF, Folstein SE, McHugh PR. "Mini-mental state". A practical method for grading the cognitive state of patients for the clinician. *J Psychiatr Res* 1975; 12: 189–98.
- Gerendasy DD, Sutcliffe JG. RC3/neurogranin, a postsynaptic calpactin for setting the response threshold to calcium influxes. *Mol Neurobiol* 1997; 15: 131–63.
- Hayashi Y. Long-term potentiation: two pathways meet at neurogranin. *EMBO J* 2009; 28: 2859–60.
- Huang KP, Huang FL, Chen HC. Characterization of a 7.5-kDa protein kinase C substrate (RC3 protein, neurogranin) from rat brain. *Arch Biochem Biophys* 1993; 305: 570–80.
- Huang KP, Huang FL, Jager T, Li J, Reymann KG, Balschun D. Neurogranin/RC3 enhances long-term potentiation and learning by promoting calcium-mediated signaling. *J Neurosci* 2004; 24: 10660–9.
- Jack CR, Jr, Bernstein MA, Fox NC, Thompson P, Alexander G, Harvey D, et al. The Alzheimer's Disease Neuroimaging Initiative (ADNI): MRI methods. *J Magn Reson Imaging* 2008; 27: 685–91.
- Kovacs GG, Milenkovic I, Wohrer A, Hofberger R, Gelpi E, Haberler C, et al. Non-Alzheimer neurodegenerative pathologies and their combinations are more frequent than commonly believed in the elderly brain: a community-based autopsy series. *Acta Neuropathol* 2013; 126: 365–84.
- Kvartsberg H, Duits FH, Ingelsson M, Andreassen N, Öhrfelt A, Andersson K, et al. Cerebrospinal fluid levels of the synaptic protein neurogranin correlated with cognitive decline in prodromal Alzheimer's disease. *Alzheimer's Dement* 2014. <http://dx.doi.org/10.1016/j.jalz.2014.10.009>.
- Landau SM, Mintun MA, Joshi AD, Koeppe RA, Petersen RC, Aisen PS, et al. Amyloid deposition, hypometabolism, and longitudinal cognitive decline. *Ann Neurol* 2012; 72: 578–86.
- Masliah E, Mallory M, Alford M, DeTeresa R, Hansen LA, McKeel DW, Jr, et al. Altered expression of synaptic proteins occurs early during progression of Alzheimer's disease. *Neurology* 2001; 56: 127–9.
- Mattsson N, Insel PS, Landau S, Jagust W, Donohue M, Shaw LM, et al. Diagnostic accuracy of CSF Ab42 and florbetapir PET for Alzheimer's disease. *Ann Clin Transl Neurol* 2014; 1: 534–43.
- Mosconi L, Pupi A, De Leon MJ. Brain glucose hypometabolism and oxidative stress in preclinical Alzheimer's disease. *Ann N Y Acad Sci* 2008; 1147: 180–95.
- Pak JH, Huang FL, Li J, Balschun D, Reymann KG, Chiang C, et al. Involvement of neurogranin in the modulation of calcium/calmodulin-dependent protein kinase II, synaptic plasticity, and spatial learning: a study with knockout mice. *Proc Natl Acad Sci USA* 2000; 97: 11232–7.
- Repra A, Deloulme JC, Sensenbrenner M, Ben-Ari Y, Baudier J. Neurogranin: immunocytochemical localization of a brain-specific protein kinase C substrate. *J Neurosci* 1990; 10: 3782–92.
- Rosen WG, Mohs RC, Davis KL. A new rating scale for Alzheimer's disease. *Am J Psychiatry* 1984; 141: 1356–64.
- Scheff SW, Price DA, Schmitt FA, DeKosky ST, Mufson EJ. Synaptic alterations in CA1 in mild Alzheimer disease and mild cognitive impairment. *Neurology* 2007; 68: 1501–8.
- Shaw LM, Vanderstichele H, Knapiak-Czajka M, Clark CM, Aisen PS, Petersen RC, et al. Cerebrospinal fluid biomarker signature in Alzheimer's disease neuroimaging initiative subjects. *Ann Neurol* 2009; 65: 403–13.
- Sze CI, Troncoso JC, Kawas C, Mouton P, Price DL, Martin LJ. Loss of the presynaptic vesicle protein synaptophysin in hippocampus correlates with cognitive decline in Alzheimer disease. *J Neuropathol Exp Neurol* 1997; 56: 933–44.
- Thorsell A, Bjerke M, Gobom J, Brunhage E, Vanmechelen E, Andreassen N, et al. Neurogranin in cerebrospinal fluid as a marker of synaptic degeneration in Alzheimer's disease. *Brain Res* 2010; 1362: 13–22.